



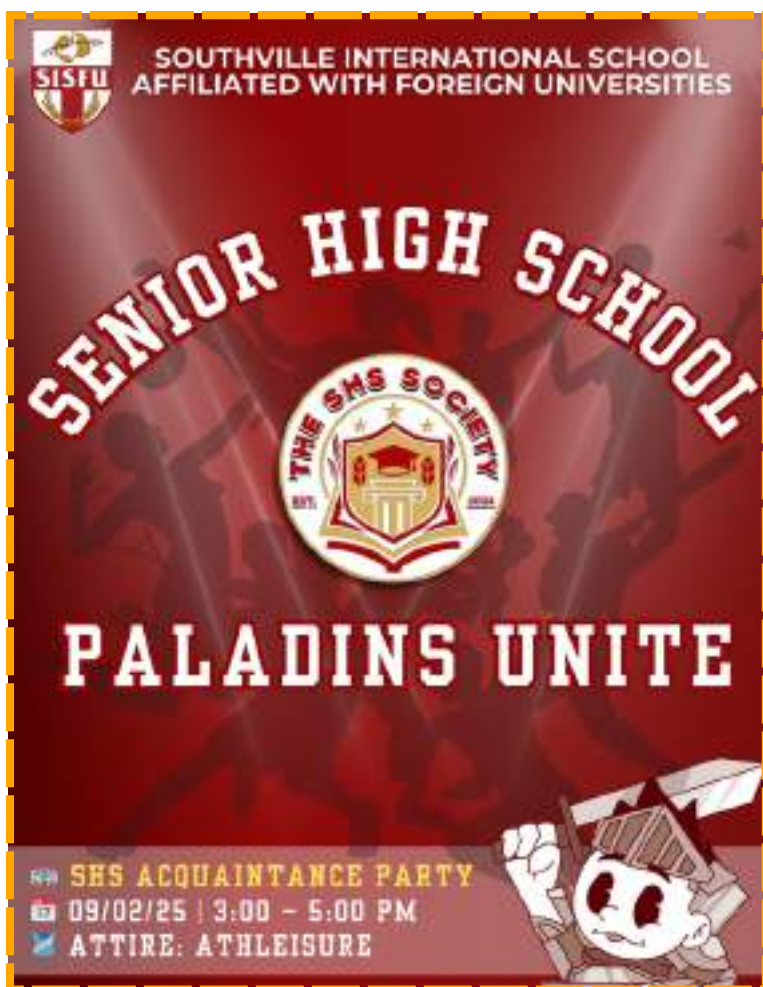
SOUTHVILLE INTERNATIONAL SCHOOL AFFILIATED WITH FOREIGN UNIVERSITIES

SPB Issue No. 03 | ACADEMIC YEAR: 2025 – 2026 | September

STUDENTS AND PARENTS' BULLETIN

Senior High School

SHS ACQUAINTANCE PARTY: PALADINS UNITE



The SISFU Senior High School community officially opened the school year with an afternoon of fun, laughter, and camaraderie during the SHS Acquaintance Party 2025 held last September 2, 2025, at the SISFU Gym. With the theme "SHS Paladins Unite," the event brought together students from different grade levels, fostering stronger bonds and creating lasting memories.

The program began with energetic team-building games designed not only to entertain but also to encourage collaboration, communication, and sportsmanship among the students. Divided into groups, participants eagerly strategized, supported one another, and celebrated both victories and defeats with cheers and smiles. The friendly competition highlighted the importance of unity—reminding everyone that being a Paladin means working together and lifting each other up.

VISION

SISFU will be the leading transnational university that develops global leaders and professionals. It is distinguished by its excellent academic standards, outstanding instructional methodologies, relevant research, high levels of student achievement, a culture of innovation, and strong partnerships with ranked educational institutions. Its graduates are sought after by top national and global organizations.



MISSION

SISFU, the premier transnational university in the Philippines, delivers globally-relevant quality undergraduate and graduate programmes developed by accredited educational partners from the UK, Australia and the USA. Using rigorous international standards in instruction, assessment and research, and supported by excellent facilities, highly-qualified faculty and industry collaboration, SISFU prepares students to be globally competitive, competent professionals, successful entrepreneurs, leaders and movers of society.



As the activities progressed, the gym echoed with excitement and laughter, proving that the Acquaintance Party was more than just a gathering—it was an opportunity to build friendships and strengthen the sense of belonging in the SHS community. For many students, especially the new ones, the event became a chance to meet peers, form connections, and feel welcomed into the SISFU family.

After the games, the students gathered for a shared snack time, which carried its own special significance. This year's event was made extra meaningful because of the generous pledges of food from the students themselves. Their contributions created not only a variety of snacks to enjoy but also a spirit of giving and cooperation that perfectly embodied the theme of the day. What could have been a simple break turned into a feast of gratitude, where students shared not just food but also conversations, laughter, and the joy of being together.

The SHS Department expressed their heartfelt gratitude to all students who participated enthusiastically in the games and to those who extended their generosity through food pledges. Their involvement and support transformed the Acquaintance Party into a memorable and successful gathering that truly lived up to its theme.

In the end, the SHS Acquaintance Party 2025 was not simply an afternoon of entertainment—it was a celebration of unity, generosity, and the strong Paladin spirit. It set the tone for the months ahead, reminding everyone that no matter the challenges of the school year, they are stronger when they stand together.

As the event came to a close, smiles filled the gym and a renewed sense of community lingered among the students. With bonds strengthened, spirits lifted, and friendships formed, the Paladins look forward to facing the school year with optimism, resilience, and a united heart.

Truly, on this day, the Paladins did not just meet—they united.

MESSAGE FROM THE

EXECUTIVE DIRECTOR FOR INSTITUTIONAL AFFAIRS

Dearest Paladins,

Welcome to the SISFU Community!

We are excited - welcome to the newbies and happy to see you back returnees. As we have entered the Academic Year 2025-2026, it's a new chapter, let us all make it a memorable and fulfilling journey. Starting your class at school is more just about entering new classrooms or meeting new teachers—it's about discovering more of who you are and who you can become.

At SISFU, we believe that a truly happy campus is not measured by how many students are around, but by the sincere friendships we build, the joy of helping one another, and the pride of being part of a community that cares. True joy begins within you—when you are focused, driven, and open to growth.

This year, let the SISFU 5Cs guide you: Character to make good choices, Competence to excel in your studies, Commitment to push through challenges, Creativity to innovate and explore, and Collaboration to work together as one SISFU family.

Remember, you are not alone in this journey—we are here to support you every step of the way.

So be bold, be curious, and most of all, be joyful as you embrace great things today, and more.

Be part of that #SISFUn experience. It lies on you. Cheers!



Ma. Cristina Aguilar-Borja
*Executive Director
for Institutional Affairs*



GRADE 11 STUDENTS BEGIN IXL JOURNEY IN MATHEMATICS



SISFU launches IXL Program to strengthen Math mastery among SHS students

The Grade 11 students of SISFU have officially embarked on their IXL Journey in Mathematics, a program designed to strengthen their mastery of mathematical concepts through personalized, skills-based practice. With the guidance and support of their teachers, Mr. Justin Belostrino and Mr. Jackie Llanora, students have already begun working on specific skills tailored to their level and learning needs.

The IXL platform, known for its adaptive and interactive approach to learning, offers students opportunities to practice problems aligned with their curriculum. More than just drills, IXL challenges learners to think critically, apply mathematical reasoning, and refine their problem-solving strategies. By engaging in consistent practice, Grade 11 students are able to track their progress in real-time, identify areas for improvement, and build confidence in their math skills.

Sir Justin and Sir Jackie have been instrumental in guiding the students through the program, ensuring that each learner is not only focused on completing tasks but also on understanding concepts deeply. Their mentorship allows students to see mathematics not as a subject of mere numbers and equations, but as a tool for logical thinking and practical application.



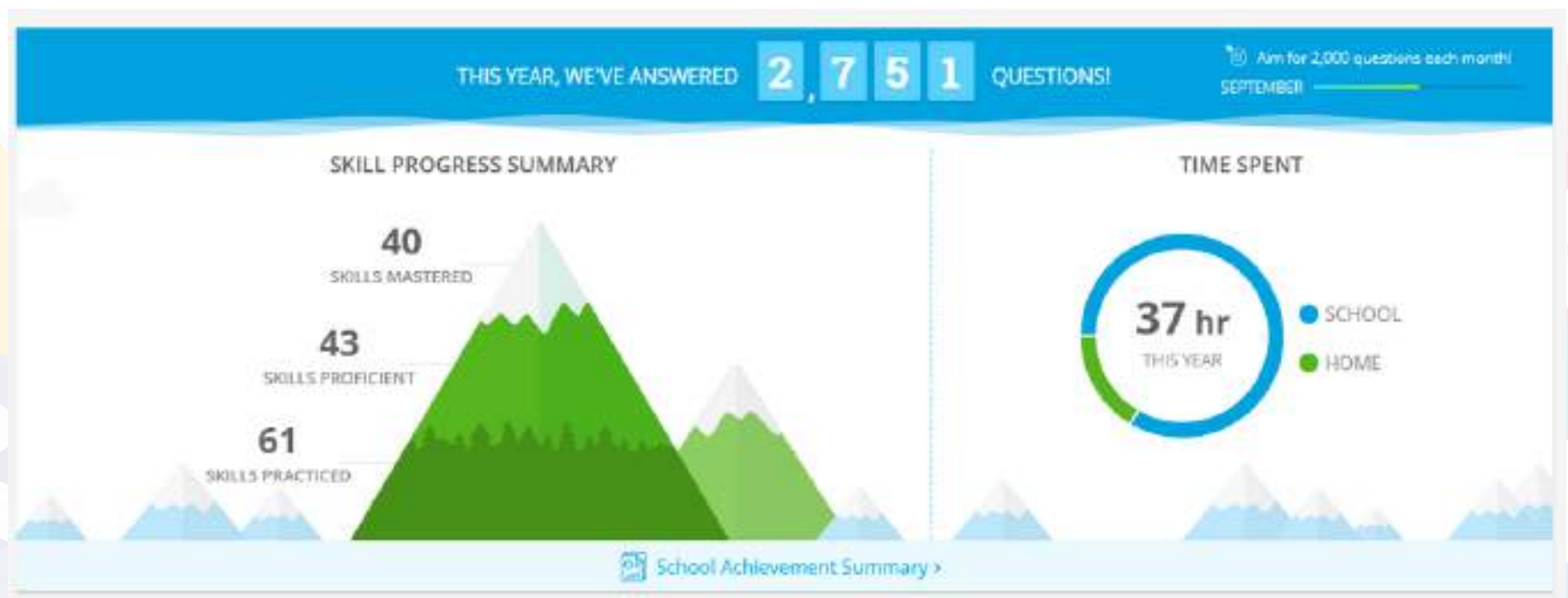
GRADE 11 STUDENTS BEGIN IXL JOURNEY IN MATHEMATICS



Early feedback from the students shows excitement and determination as they begin their IXL journey. For many, the platform offers a balance of challenge and encouragement, motivating them to push further and achieve mastery in their math subjects. Teachers also see the program as an opportunity to bridge gaps in learning while reinforcing classroom discussions.

The IXL journey is more than an academic exercise—it is an investment in the students' growth, discipline, and perseverance. As they continue to develop their skills, guided closely by their teachers, the Grade 11 Paladins are expected to gain not only higher proficiency in mathematics, but also greater confidence to face the challenges of the subject.

With determination, consistent practice, and the support of dedicated mentors, the IXL Journey of the Grade 11 students is well on its way to becoming a story of success, growth, and mastery.





THE DUKE OF EDINBURGH'S INTERNATIONAL AWARD



We're excited to announce that our Senior High School Paladins can now begin their journey with the world-renowned Duke of Edinburgh's International Award—a program that builds resilience, leadership, and lifelong skills.

Through service, skills development, physical recreation, and adventurous journeys, students will challenge themselves and grow beyond the classroom.

By taking part in this program, students develop essential qualities such as discipline, collaboration, resilience, creativity, and accountability—skills that set them up for success in academics, future careers, and life as a whole.

The Duke of Edinburgh's International Award helps the youth build discipline, teamwork, resilience, and creativity—skills for success in school, career, and life. Recognized worldwide by universities and employers, it strengthens your portfolio, grows your leadership through service and adventure, and awards you a certificate that lasts a lifetime.



REGISTER NOW





THEME OF THE YEAR

Nurturing the 5Cs through Academic Rigor, Grit, and a Growth Mindset: Leading, Learning, and Thriving Beyond AI

This school year, we set our sights on preparing our Paladins not only for academic success, but also for the greater challenges of the future. By nurturing the 5Cs—Competence, Character, Collaboration, Commitment to Achieve, and Creativity/Innovation—we aim to empower every student to grow into resilient leaders and lifelong learners.

Through academic rigor, we embrace excellence; through grit, we strengthen perseverance; and through a growth mindset, we learn to see challenges as opportunities for progress. Together, these values shape Paladins who are ready to lead with courage, learn with purpose, and thrive with confidence in a rapidly changing world where AI and technology continue to evolve.

This year's theme is not only a call to action but also a promise: that every Paladin will be guided, challenged, and inspired to become the best version of themselves—ready to make an impact within and beyond the classroom.

Let us unite under this theme and move forward with passion, resilience, and determination to lead, learn, and thrive beyond AI.



THE **LEGO** CHALLENGE


Where Creativity Clicks Together.

Get ready, Paladins! This Wednesday, September 10, at 8:30 AM at the SISFU MPH, the Swiss Education Group, in partnership with SISFU, invites you to a one-of-a-kind team-building experience: the LEGO Challenge!

Led by our special guests from the Swiss Education Group—Mr. John Daly, Academic Director, and Ms. Angela Gouwtama, Regional Manager—you'll put your creativity, collaboration, and leadership to the test. But here's the twist: you'll be building in complete silence.

Can you strategize without words and still create something amazing with your team?

 Venue: MPH

 Time: 8:30 AM sharp

 Date: September 10, 2025

Bring your imagination. Bring your energy. Let the (silent) building begin!

#PaladinsLead #SPBEvents #LEGOChallenge

Hosted by:



John Daly
Academic Director



Angela Gouwtama
Regional Manager



World-Class Learning: SISFU x UTS Workshop on Business Analytics & Computer Science



We are excited to share that Southville International School Affiliated with Foreign Universities (SISFU) is hosting a special academic workshop in partnership with the University of Technology Sydney (UTS) – proudly ranked among the Top 100 Universities worldwide (QS World Rankings)!

This exclusive workshop will be led by esteemed professors from UTS, who will share their expertise on the latest global trends in Business Analytics and Computer Science. Students will gain valuable insights into how these fast-growing fields are shaping industries, transforming businesses, and creating new opportunities in the digital age.

By joining this workshop, SISFU students will not only expand their knowledge, but also experience firsthand the kind of world-class education that UTS is known for. This is an incredible opportunity to learn from international experts, ask meaningful questions, and explore future-ready career paths in two of today's most in-demand disciplines.

 Date: September 16, 2025

 Time: 3:00 – 5:00 PM

 Venue: SISFU MPH

Certificate of Attendance will be awarded to participants.

Don't miss out on this chance to enhance your academic journey, connect with global thought leaders, and be inspired to dream bigger.



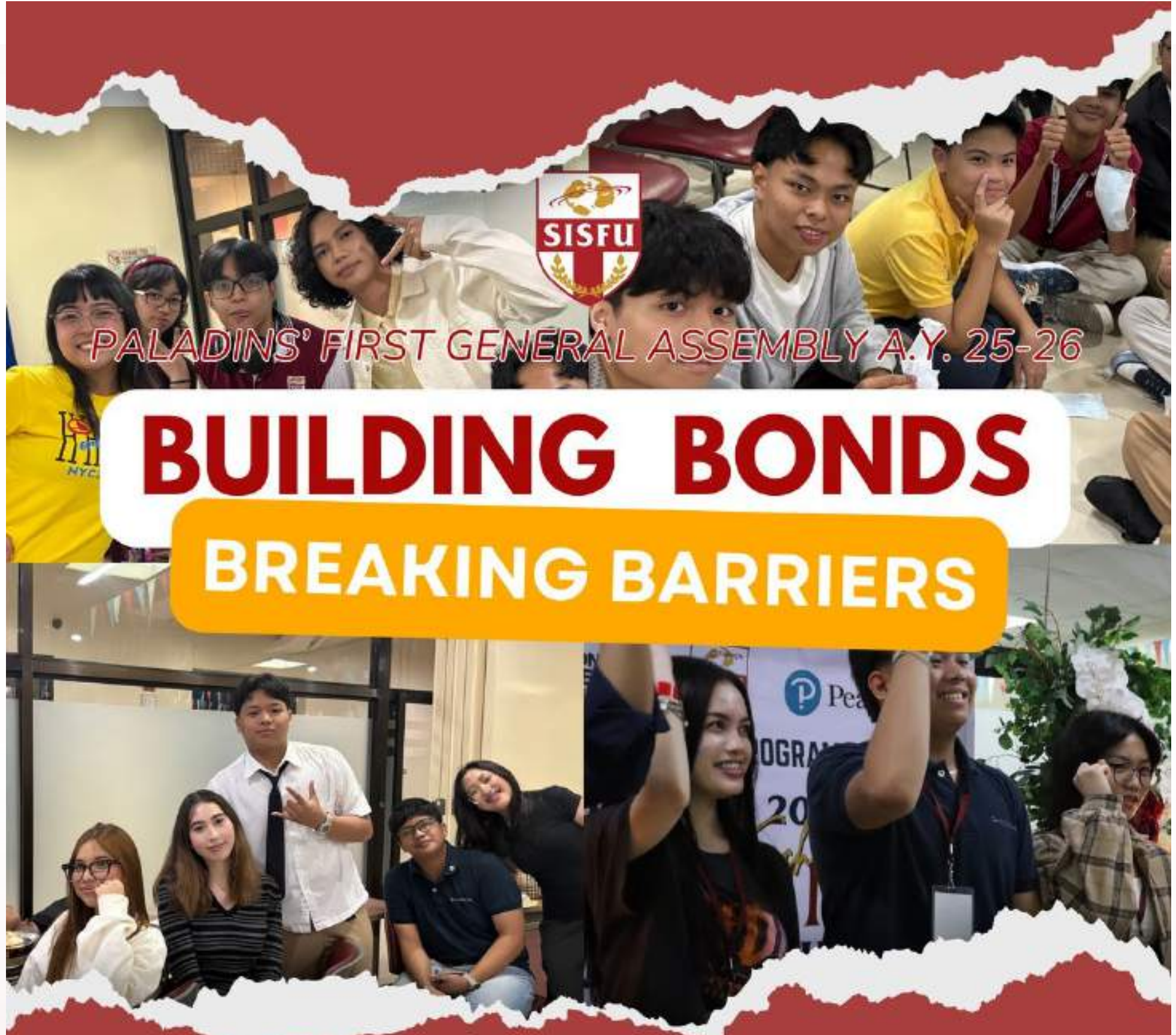
Stronger Together: Building the SISFU Community



PALADINS' FIRST GENERAL ASSEMBLY A.Y. 25-26

BUILDING BONDS

BREAKING BARRIERS



September 8, 2025 | 3:00-5:30 PM | SISFU MPH |  ZOOM For OBL & FLEX



HOGWARTS EXPRESS IS HERE!



Wands at the ready, Paladins! ✨ The Senior High School family is adding a magical twist to the First Paladins' General Assembly on September 8, 2025 with the enchanting theme "SHS Goes to Hogwarts."

As part of our SHS booth, we are transforming the space into our very own wizarding world – complete with the spirit of Hogwarts to showcase creativity, unity, and the magic of being a Paladin. From the moment you step into the booth, expect a spellbinding experience where the SHS community comes alive in true Harry Potter fashion.

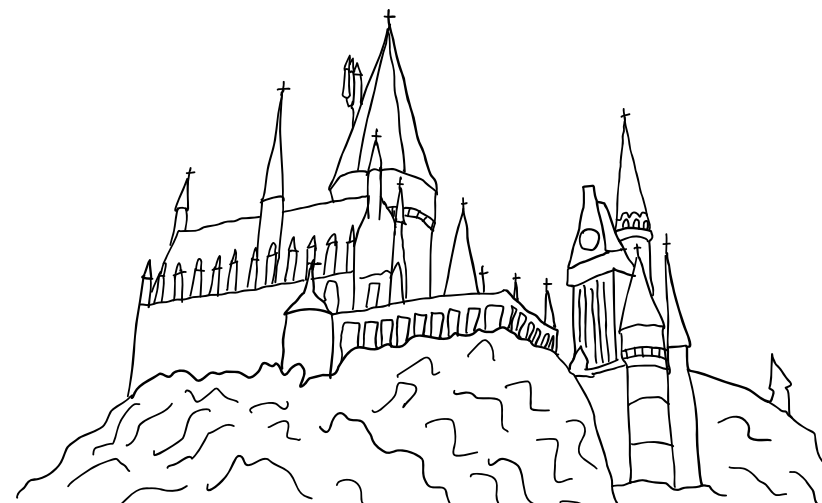
To make the day even more special, all SHS students are invited to dress in smart casual white with a touch of wizarding flair. Think of it as your chance to channel your inner Gryffindor, Ravenclaw, Hufflepuff, or Slytherin while still keeping it classy!

This Harry Potter theme is exclusively for SHS, and it's our way of showing that school spirit can be creative, fun, and magical all at the same time. Get ready for a gathering that's not just about assembly – it's about experiencing the wonder of Hogwarts right here at SISFU.



Don't miss the chance to be part of this unforgettable event.

See you there, Paladins!





CALENDAR OF ACTIVITIES



**DON'T
FORGET**

September 8, 2025

SHS Election Campaign

September 8, 2025

Paladins' General Assembly
(3:00-5:30pm)

September 10, 2025

The Lego Challenge

September 12, 2025

SHS Meeting De Avance | SHS
Election Day

September 16, 2025

University of Technology Sydney

September 22-26, 2025

SHS Term 1 Midterm Assessments





VALUE OF THE WEEK



Getting to Know the Members of the School Community



“When schools create strong communities, students feel valued, connected, and motivated to learn.”

Gregg Talcott

[▶ WATCH NOW](#)



SOCIO-EMOTIONAL LEARNING CORNER



“Building Connections, Building Community”

Why It Matters?

Getting to know the people around us creates trust, respect, and a sense of belonging. When we take the time to connect with others, we build stronger relationships, improve teamwork, and make our school community a place where everyone feels valued.

SEL Focus Skills

- **Self-Awareness** – Recognize how you feel when meeting new people.
- **Social Awareness** – Notice and appreciate the strengths and experiences of others.
- **Relationship Skills** – Practice active listening, kindness, and open communication.
- **Responsible Decision-Making** – Choose actions that help you connect positively with others.
- **Empathy** – Put yourself in someone else’s shoes to understand their perspective.

Practical Tips for Students

- **Introduce Yourself** – Say hello and learn someone’s name you don’t know yet.
- **Small Kindness** – Hold the door, share a smile, or offer help.
- **Lunch Connection** – Sit with a new group or invite someone to join yours.
- **Curious Question** – Ask about a classmate’s hobby, interest, or favorite subject.
- **Gratitude Note** – Thank a teacher, staff member, or peer for something they do.



STUDY HABITS

“Study with Focus, Learn with Balance”

1. **Set Your Intention** – Begin each study session with a clear goal and a calm mindset.
2. **Focus in Bursts** – Work in short, concentrated sessions (25–30 minutes) and recharge with mindful breaks.
3. **Eliminate Distractions** – Create a calm, clutter-free space that supports focus and clarity.
4. **Review and Reflect** – End your study time by summarizing key points and noting your progress.
5. **Rest and Recharge** – Prioritize sleep, movement, and healthy habits to keep your mind sharp.





DISCIPLINE CORNER



Standards of Academic Integrity

A SISFU student shall not cheat.

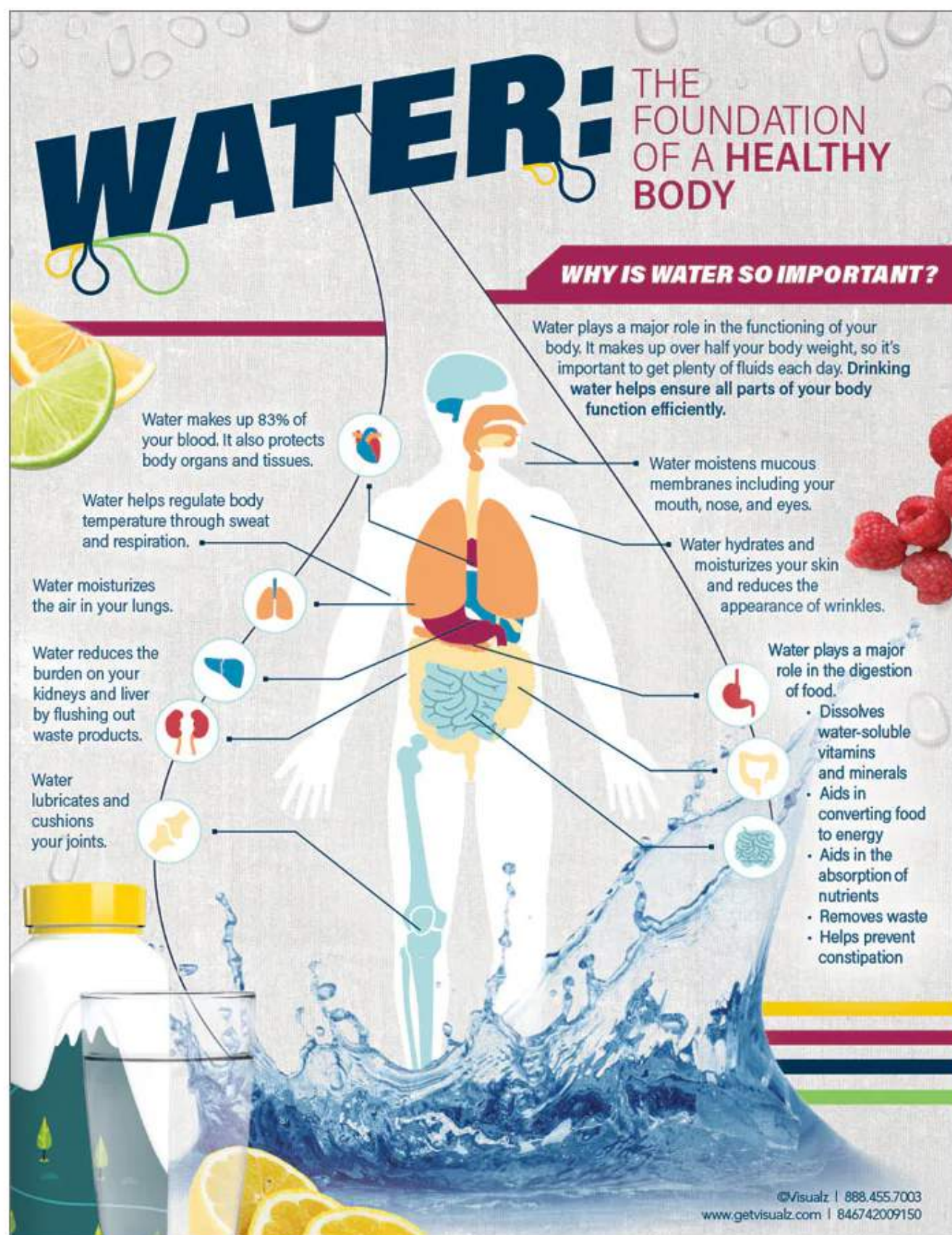
Whereas CHEATING is defined as the act of obtaining or attempting to obtain credit for academic work through the use of dishonest, deceptive, and fraudulent means, a student, therefore, shall not commit any of the following:

- Give, receive, or use unauthorized or prohibited information, resources, or assistance on an examination, assignment, project, or any academic requirement;
- Write, take, research, develop, prepare, or answer an examination, assignment or homework, create a project, or make any academic requirement for another student, in whole or in part;
- Submitting an examination, assignment, project, or any academic requirement that is written, taken, researched, developed, prepared, or created, whether in whole or in part, by another person or through the use of an artificial intelligence tool;
- Prevent or interfere with the use by other students of any library, laboratory, or other academic-related resource;
- Damage, destroy, impair, or steal any library, laboratory, or other academic-related resources or another student's completed assignments;
- Copy, in whole or in part, from another student during a test, competition, seatwork, project, etc.;
- Purposely allow oneself to be an accomplice in cheating by permitting another student to copy from one's academic work during a test;
- Alter or interfere with grading done on any form of academic work or as seen on the report card or any grading document/record;
- Use or consult, during an examination, any sources (e.g. electronic equipment such as mobile phones, laptops, etc.), other students, or any material not authorized by the teacher/instructor;
- Commit other acts of fraud or deceit;
- Steal and/or sell copies of tests and/or other instruments of evaluation; or forge signatures on any document that would require the signature of an authority (e.g. school officer, teacher/instructor, or parent, etc.).

WATER: THE FOUNDATION OF A HEALTHY BODY

WHY IS WATER SO IMPORTANT?

Water plays a major role in the functioning of your body. It makes up over half your body weight, so it's important to get plenty of fluids each day. Drinking water helps ensure all parts of your body function efficiently.



Water makes up 83% of your blood. It also protects body organs and tissues.

Water helps regulate body temperature through sweat and respiration.

Water moistens mucous membranes including your mouth, nose, and eyes.

Water hydrates and moisturizes your skin and reduces the appearance of wrinkles.

Water moisturizes the air in your lungs.

Water reduces the burden on your kidneys and liver by flushing out waste products.

Water plays a major role in the digestion of food.

- Dissolves water-soluble vitamins and minerals
- Aids in converting food to energy
- Aids in the absorption of nutrients
- Removes waste
- Helps prevent constipation

Water lubricates and cushions your joints.

©Visualz | 888.455.7003
www.getvisualz.com | 846742009150

LEARN MORE





PALADINS' PAGE

Bidding on What Matters

For me, I didn't fight for just one value; I fought for each and every value equally because I believe we can earn and learn them as we grow.

-Mikko Jethro Manalo



I fought the most for happiness because it affects all the other values. Being glad to take part in the betting pool made me more willing to embrace each of them.

-Franz Aldrich Labanen



Happiness has always been important to me. Even if I were stuck in a cage, as long as I'm happy, the experience would still be meaningful and positive.

-Shannon Smith



My values help me with my daily decisions because they guide how I should respond to certain situations and how I should treat others.

-Cristoph Paculan



The value I fought hardest for was freedom. I firmly believe that having the freedom to pursue what you want in life is the greatest gift we can embrace during our short time on earth.

-Bernadine Ryza Sadac



These values guide my daily decisions by reminding me to act with intention rather than without thought.

-Kenneth Ordoñez



The value I'd fight hardest for is love. In the end, all we truly have is love. Be kind to one another, and treat others the way you want to be treated.

-Andre Gorosin



I make decisions that protect my freedom, and I pursue quality education to secure my future success.

-Andrius Datingguino



Health is our foundation, and with it, everything else follows. The same goes for love—Jesus is love, and if you love Him and your neighbor, everything else in life will fall into place.

-Jan Matthew Vives





THE SHS SOCIETY CORNER



YOUR VOTE HAS POWER

YOUR VOTE MATTERS

VOTE RIGHT

USE YOUR voice FOR CHANGE

Southville International School
affiliated with Foreign Universities

Senior High School Society

YES, PLEASE

	President Psalm M. Borines Grade 12 ABM
	Executive Vice President Elisha M. Borines Grade 11 ABM
	Internal Vice President Reden Anthony A. Ayala Grade 11 ABM
	GAS Representative Princess Shrine V. Mabanta Grade 11 GAS



THE SHS SOCIETY CORNER



YOUR VOTE HAS POWER

YOUR VOTE MATTERS

VOTE RIGHT

USE YOUR voice FOR CHANGE

Southville International School
affiliated with Foreign Universities

Senior High School Society

PAL PARTY

- 

President
Bernadine Ryza S. Sadac
Grade 12 ICT
- 

Executive Vice President
JC C. Roman
Grade 12 ICT
- 

Internal Vice President
Zane Schuyler Tinimbang
Grade 11 ICT
- 

Secretary
Jeslyn Caoimhe M. Chou
Grade 12 ICT
- 

ABM Representative
Mary Kaila L. Gors
Grade 12 ABM
- 

ICT Representative
Crystoph Anthony B. Paculan
Grade 12 ICT



THE SHS SOCIETY CORNER



Campaign with Honor: Upholding Paladin Values in the 2025 SHS Society Elections

As we begin the SHS Society Campaign Period (September 8–12, 2025), we remind all Paladins to uphold the values of respect, fairness, honesty, and responsibility throughout the elections.

Maintaining these principles is essential for a meaningful and positive campaign experience. Respectful and honest campaigning reflects integrity and shows that candidates value truth and transparency. Fairness ensures that every student leader has an equal opportunity to share their vision without intimidation or unfair advantage. Responsible conduct builds trust not only among fellow candidates, but also within the student body, making the election process credible and inspiring.

Beyond the campaign, these values set a powerful example of leadership. By demonstrating maturity and unity, student leaders show that elections are not about division but about working together toward shared goals.

Let's campaign positively and lead with honor, Paladins!

SHS SOCIETY ELECTIONS





BEYOND THE SHIELD: MEET PAL, OUR FRIENDLY PALADIN



THE FOCUSED PALADIN



THE MINDFUL PALADIN



The Champion Paladin



**THE ADVENTUROUS
PALADIN**



**THE TRAILBLAZING
PALADIN**



THE WISE PALADIN





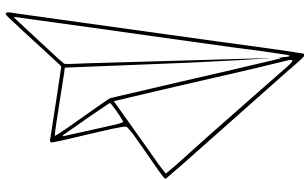
BEYOND THE SHIELD: MEET PAL, OUR FRIENDLY PALADIN



The Active Paladin



**The Caffeinated
Paladin**



**THE SUPPORTIVE
PALADINS**



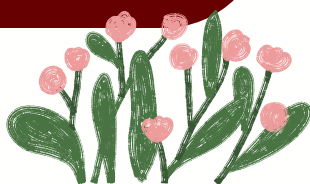
The Focused Paladin



THE GROOVY PALADINS



The Wizarding Paladin





SHS VARSITY JACKET



Wear the Paladin Spirit. Live the Legacy.

Gear up, SHS! The Society Varsity Jacket is finally here—more than just a jacket, it's a badge of pride and community. Get yours now and show off your SHS Paladin pride in style!



ORDER NOW



UNISEX

ACCEPTABLE TOLERANCE ± 0.5" MEASUREMENTS ARE IN INCHES

SIZE	CHEST	BODY LENGTH
XS	20"	25.5"
S	21"	26.5"
M	22"	27.5"
L	23"	28.5"
XL	24"	29.5"
2XL	26"	31.5"
3XL	27"	32.5"



Emman named Ulirang Kabataan Awardee 2025



EMMAN FRANC **ULIRANG KABATAAN AWARDEE 2025** **AMBASSADOR**

School: **SOUTHVILLE INTERNATIONAL SCHOOL AFFILIATED
WITH FOREIGN UNIVERSITIES (SISFU)**
Las Pinas City, Metro Manila

EMMAN : A Multifaceted Luminary

Beyond entertainment, Emman Franc is a committed influencer and youth advocate. He utilizes his platform to promote positivity and inclusivity, with a special focus on supporting people with disabilities. As a brand ambassador for Grains Foundation for PWD, Inc., he champions causes that encourage acceptance and empowerment, making a significant impact in the community.

Given his numerous contributions and exemplary work, Emman Franc truly deserves recognition at the Ulirang Kabataan Awards 2025. His role as an ambassador and advocate for positive change aligns with the values celebrated by the awards. Emman Franc's commitment to uplifting others and his diverse talents make him a role model and an inspirational figure for the youth.

As a whole, Emman Franc's multifaceted career and advocacy work showcase a remarkable individual whose contributions continue to resonate with many. His recognition at the Ulirang Kabataan Awards would not only honor his achievements but also inspire others to follow in his footsteps.

A True Inspiration! Congratulations, Emman Franc!

Celebrate this proud moment for Emman, who has been recognized as an Ulirang Kabataan Awardee 2025.

This achievement honors not only his hard work and dedication, but also his passion for leadership, service, and making a positive impact on the community.

We are proud of you, Emman – keep shining and inspiring others with your journey.



SENIOR HIGH SCHOOL HIGHLIGHTS



PALALANDINS





AROUND SGEN



Watch Danielle del Rosario's TEDx Talk: "The Transformative Impact of Goodness and Kindness"

As Southville marks 35 years of excellence, we are reminded that true success goes beyond achievements—it's about making a difference. In her TEDx Talk, Danielle del Rosario—corporate trailblazer and advocate for food security and sustainability—calls on us to embrace kindness, courage, and intentionality to create lasting impact.

Special thanks to the Southville x TEDTalk Team, powered by our dedicated K12 and IB students and mentored by their Club Adviser, Mr. Gio Pastor.

Scan the QR code to watch the full video.



AROUND SGEN



SOUTHVILLE
INTERNATIONAL SCHOOL
AND COLLEGES

35

YEARS
OF QUALITY
INTERNATIONAL
EDUCATION

SOUTHVILLE 35th FOUNDATION CELEBRATION

[LEARN MORE](#)



From a single preschool class in 1990, Southville International School and Colleges (SISC) has grown into a globally recognized leader in education. The first Philippine school granted “international character” under Republic Act 9493, Southville is now an IB World School, ISO-certified, WASC-accredited, and a CHED Autonomous Institution.

Its impact reaches far and wide—ranking 105th in the 2025 WURI World University Rankings for Innovation and 1st in Teaching and Learning in the Philippines under AppliedHE ASEAN 2025. More importantly, Southville has shaped outstanding alumni, from NASA’s Mark Gonzales to Microsoft’s Gen Mark Tanno, and consistently produces board exam topnotchers and international achievers.

Beyond academics, Southville champions service through Southville For Others (SFO) and global partnerships like Liter of Light, ensuring excellence is matched with compassion.

For 35 years, Southville has nurtured world-ready leaders with competence, character, collaboration, commitment to achieve, and creativity—truly the home of the Movers of Society.



BE A SISFU PALADIN TODAY!



SOUTHVILLE INTERNATIONAL SCHOOL
AFFILIATED WITH FOREIGN UNIVERSITIES

Make noise with **ONLINE** **MARKETING.**

BTEC Higher National Diploma in Marketing



Pearson
BTEC

Approved Centre



BE A SISFU PALADIN TODAY!



SOUTHVILLE INTERNATIONAL SCHOOL
AFFILIATED WITH FOREIGN UNIVERSITIES

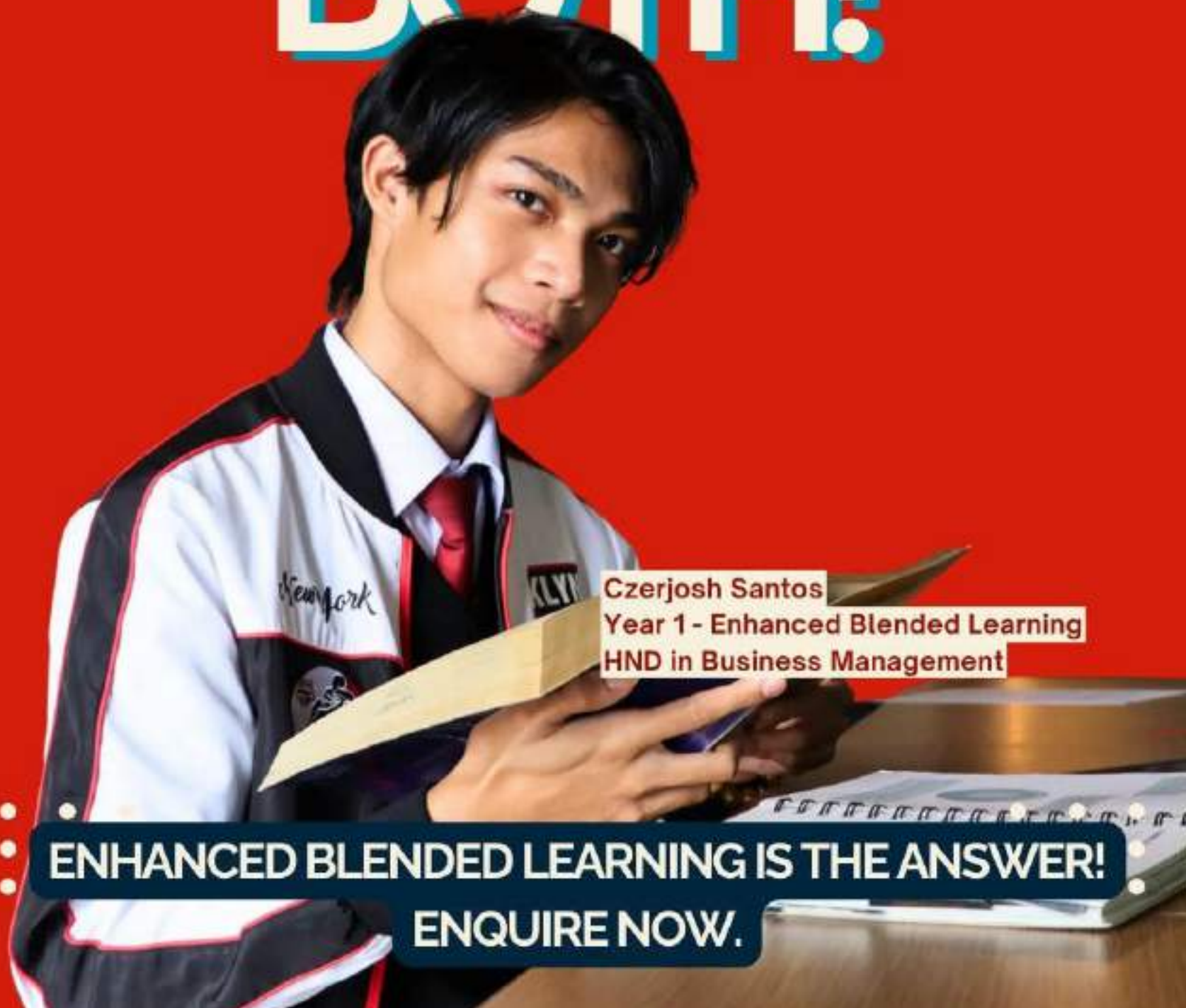


Pearson
BTEC

Approved Centre

Stuck between online and in-person studies?

CHOOSE BOTH!



Czerjosh Santos
Year 1 - Enhanced Blended Learning
HND in Business Management

ENHANCED BLENDED LEARNING IS THE ANSWER!

ENQUIRE NOW.

SISFU SENIOR HIGH SCHOOL

Where Students Thrive

ACKNOWLEDGEMENT FORM

Please acknowledge that you have received this Students and Parents' Bulletin by clicking the link above.



SENIOR HIGH SCHOOL DEPARTMENT

JOHN GEORGE P. PASTOR
SHS Principal
Allied Programmes Head



JOHN PATRICK JAVIER
SHS Faculty Member
SHS & Allied Programmes Coordinator

You may reach us through:

sisfu_shsprincipal@southville.edu.ph | 8-820-91-81 Loc. 211 | 0998 844 7762

SOUTHVILLE INTERNATIONAL SCHOOL AFFILIATED WITH FOREIGN UNIVERSITIES
UK DEGREES IN THE PHILIPPINES. YOUR GLOBAL FUTURE IS WAITING!
sisfu.edu.ph | enquiry@southville.edu.ph

