



# SOUTHVILLE INTERNATIONAL SCHOOL AFFILIATED WITH FOREIGN UNIVERSITIES

SPB Issue No. 34 | ACADEMIC YEAR: 2025 – 2026 | May

# STUDENTS AND PARENTS' BULLETIN

*Senior High School*

## THRIVING LEGACIES: CLASS OF 2026



*Senior High School*  
Where Students Thrive



### VISION

SISFU will be the leading transnational university that develops global leaders and professionals. It is distinguished by its excellent academic standards, outstanding instructional methodologies, relevant research, high levels of student achievement, a culture of innovation, and strong partnerships with ranked educational institutions. Its graduates are sought after by top national and global organizations.



### MISSION

SISFU, the premier transnational university in the Philippines, delivers globally-relevant quality undergraduate and graduate programmes developed by accredited educational partners from the UK, Australia and the USA. Using rigorous international standards in instruction, assessment and research, and supported by excellent facilities, highly-qualified faculty and industry collaboration, SISFU prepares students to be globally competitive, competent professionals, successful entrepreneurs, leaders and movers of society.

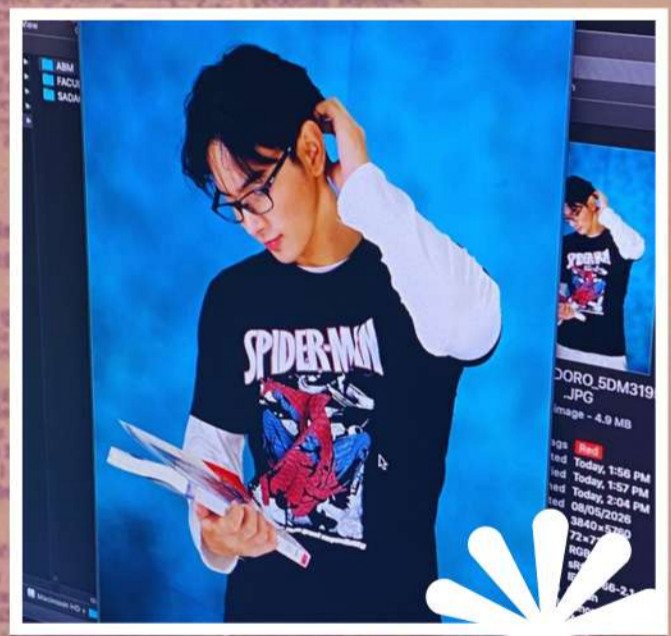


# SENIOR HIGH SCHOOL CLASS PICTURE AND GRADUATION PHOTOSHOOT



# BEHIND THE SCENES

## GRADUATION PHOTOSHOOT ❀



**SISFU SHS 9TH COMMENCEMENT EXERCISES**  
**06.27.26**

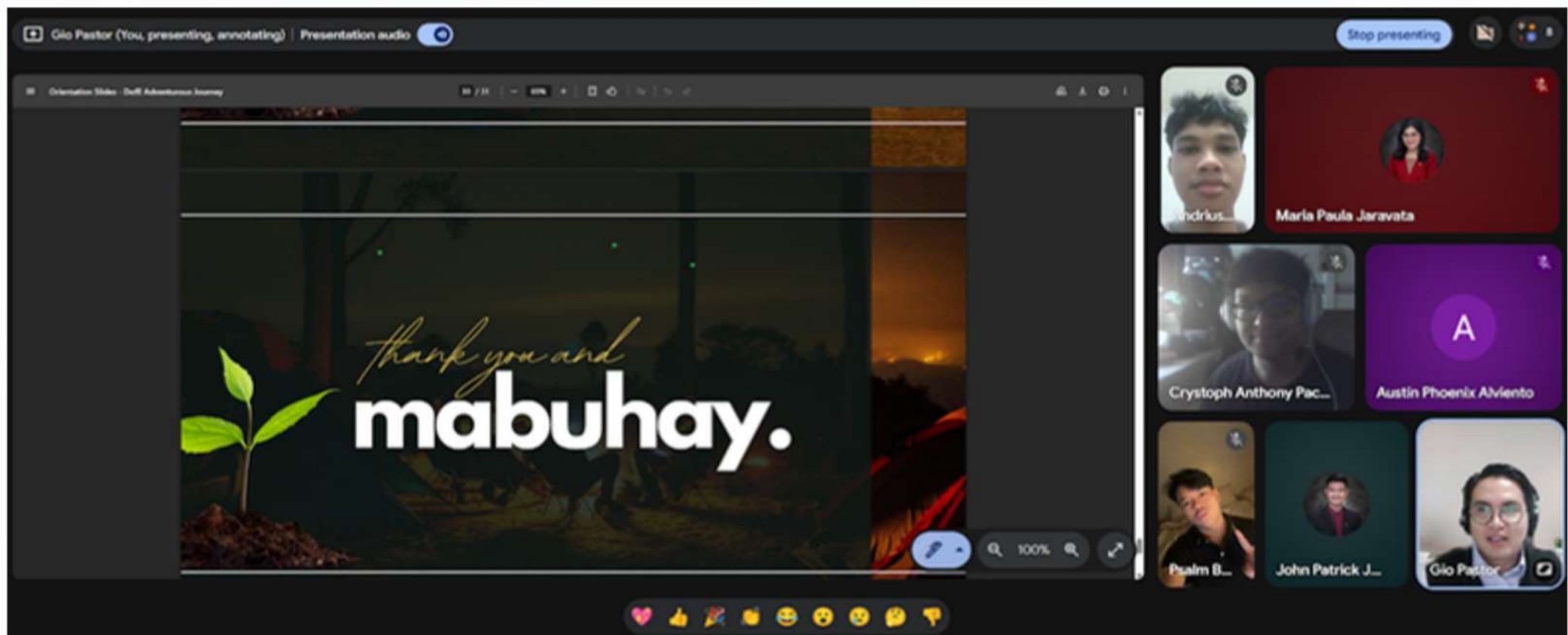




# DOFE STUDENTS AND PARENTS ORIENTATION FOR ADVENTUROUS JOURNEY



The DofE Students and Parents Orientation for the Adventurous Journey was conducted to provide important information, guidelines, and expectations regarding the upcoming activity under The Duke of Edinburgh's International Award.



During the orientation, students and parents were briefed on the details of the Adventurous Journey scheduled on May 14–15, 2026 at Mt. Lantik and Mt. Talamitam. The session aimed to ensure that participants and their parents are well-informed, prepared, and guided in supporting a safe and meaningful learning experience.



# 9<sup>TH</sup> SENIOR HIGH SCHOOL COMMENCEMENT EXERCISES



Southville International School  
affiliated with Foreign Universities

*Senior High School Division*

and the

*Graduating Class of 2026*

cordially invite you to the

9<sup>th</sup>  
**COMMENCEMENT  
EXERCISES**

*Nurturing the 5Cs (Competence, Character, Commitment to  
Achieve, Collaboration, Creativity/Innovation) through  
Academic Rigor with Grit and a Growth Mindset*



SATURDAY, 27 JUNE 2026  
10:00 AM



LUXEMBOURG HALL  
SOUTHVILLE INTERNATIONAL SCHOOL  
AND COLLEGES

*In proud partnership with:*



Pearson





# CALENDAR OF ACTIVITIES



**DON'T  
FORGET**

**May 15, 2026**

SGEN Business Plan  
Competition

**May 15, 2026**

IXL Post Test

**May 15, 2026**

Laws of Life Essay Writing  
Contest

**June 1-5, 2026**

SHS Term 3 Final Assessment

**June 5-6, 2026**

New schedule of DofE  
Adventurous Journey





# VALUE OF THE WEEK

## Treating Others the Way One Wants to be Treated



***"Do unto others as they would have you do unto them."***  
**- Brendan Schulz**

In this TEDx talk, Brendan Schulz discusses the idea behind the Golden Rule: "Treat others the way you want to be treated." He explains that while this teaches kindness and respect, people have different perspectives, cultures, and needs. Because of this, he introduces the "Platinum Rule" – treating others the way they want to be treated.



SCAN HERE



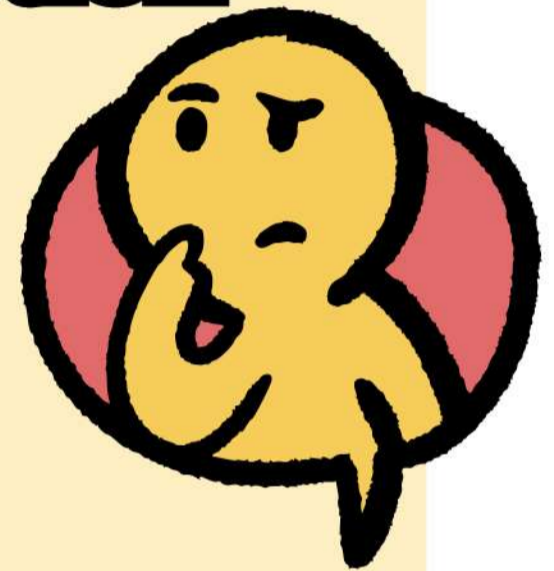
# SOCIO-EMOTIONAL LEARNING CORNER



## The Golden Rule in Action

### Why it Matters

Understanding and respecting others helps create a positive and inclusive community. The TEDx talk by Brendan Schulz reminds us that empathy and kindness strengthen relationships and encourage better communication with others.



### SEL Skills Developed

- **Self-Awareness** - Recognizing one's own thoughts, feelings, and behavior.
- **Social Awareness** - Understanding and respecting different perspectives and experiences.
- **Relationship Skills** - Building healthy and respectful connections with others.
- **Responsible Decision-Making** - Choosing actions that show kindness and fairness.
- **Self-Management** - Managing emotions and responding thoughtfully in different situations.



### Practical Tips for Students

1. Listen carefully when others are speaking.
2. Be respectful of different opinions and backgrounds.
3. Think about how your words and actions affect others.
4. Show kindness through small daily actions.
5. Practice empathy by trying to understand how others feel.

## Epistaxis (Nosebleed)



### What is Epistaxis?

Epistaxis is the medical term for nosebleed. It occurs when the blood vessels in the nose break and bleed.

### What are the common causes?



Trauma



Dry and cold weather



Nose picking



Allergies/infections

### See a Doctor If:

- Bleeding lasts for more than 20 minutes.
- Nosebleeds are frequent or heavy.
- You feel dizzy or have trouble breathing.

### HOW TO STOP A NOSEBLEED

1 Sit and lean forward.



2 Pinch the soft part of the nose.



3 Breathe through the mouth.



4 Apply cold compress.



5 Hold for 5 to 10 minutes.



# STUDY HABITS

## The conflict resolution model: How to resolve a conflict elegantly

- Listen carefully and understand the other person's perspective before reacting.
- Stay calm and avoid raising your voice during disagreements.
- Use respectful and clear communication to express your feelings and concerns.
- Focus on solving the problem together instead of blaming each other.
- Be willing to compromise and find a solution that benefits everyone involved.





# AROUND SGEN



Southville Global Education Network



SAVE THE DATE!

One SGEN. One Legacy. One Game.

## SOUTHVILLE ALUMNI TOURNAMENT 2026

# 30 DAYS TO GO UNTIL GAME DAY

Scan the QR or tap the link in the caption to register



**MAY 26, 2026**  
Final Registration

**JUNE 6, 2026**  
Tournament Day



# BE A SISFU PALADIN TODAY!



SOUTHVILLE INTERNATIONAL SCHOOL  
AFFILIATED WITH FOREIGN UNIVERSITIES



## 2 + 2 PROGRAMME

# ACCELERATED UK SENIOR HIGH SCHOOL



ADVANCE YOUR CAREER BY EARNING THESE CREDENTIALS

- SHS DIPLOMA
- PEARSON HIGHER NATIONAL CERTIFICATE
- UK BACHELOR'S DEGREE

### Enrol Now!



**JEREMIAH ONG**  
TRAVEL VLOGGER/CONTENT CREATOR  
SENIOR HIGH SCHOOL STUDENT

# SISFU SENIOR HIGH SCHOOL

*Where Students Thrive*

## ACKNOWLEDGEMENT FORM



Please acknowledge receipt of this Students and Parents' Bulletin by scanning the QR code.



Southville

## SENIOR HIGH SCHOOL DEPARTMENT

### JOHN GEORGE P. PASTOR

SHS Principal/ Allied Programmes Head  
Director, Academic Operations and Student Support



### JOHN PATRICK JAVIER

SHS Faculty Member  
SHS & Allied Programmes Coordinator

You may reach us through:

[sisfu\\_shsprincipal@southville.edu.ph](mailto:sisfu_shsprincipal@southville.edu.ph) | 8-820-91-81 Loc. 211 | 0998 844 7762

SOUTHVILLE INTERNATIONAL SCHOOL AFFILIATED WITH FOREIGN UNIVERSITIES  
UK DEGREES IN THE PHILIPPINES. YOUR GLOBAL FUTURE IS WAITING!  
[sisfu.edu.ph](http://sisfu.edu.ph) | [enquiry@southville.edu.ph](mailto:enquiry@southville.edu.ph)

